



MONTHLY MEMBERSHIP PROGRESS REPORT

District 325B2

Results as of: 6/30/2015

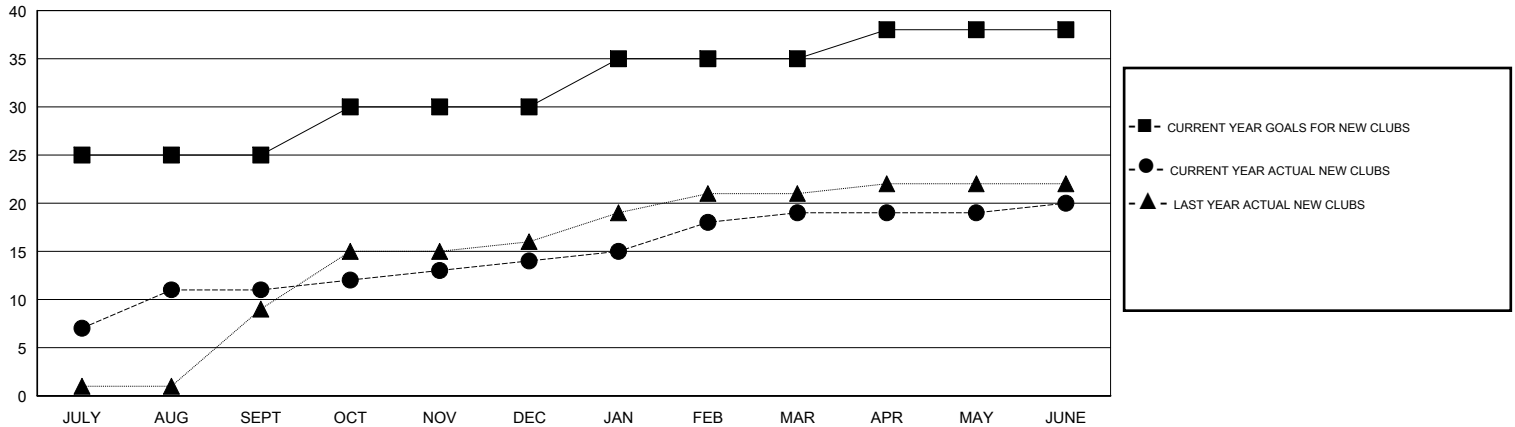
GMT: NAZMUL HAQUE

LOCATION NEPAL

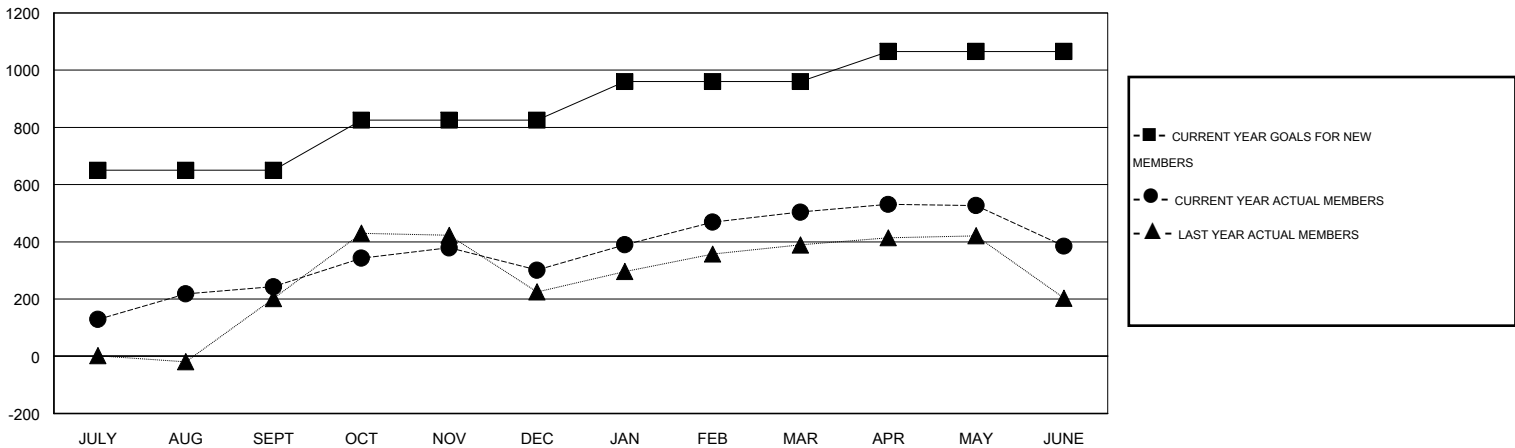
GMT CA 6

Clubs					Members				
RESULTS FOR 2014-2015					RESULTS FOR 2014-2015				
QUARTER	NEW CLUB GOAL	NEW CLUBS	DROPPED CLUBS	NET GAIN/LOSS	QUARTER	NEW MEMBER GOAL	CHARTER AND NEW MEMBERS ADDED	DROPPED MEMBERS	NET GAIN/LOSS
JULY/AUG/SEPT	25	11	1	10	JULY/AUG/SEPT	650	374	131	243
OCT/NOV/DEC	5	3	3	0	OCT/NOV/DEC	175	248	190	58
JAN/FEB/MAR	5	5	0	5	JAN/FEB/MAR	135	270	67	203
APR/MAY/JUNE	3	1	3	-2	APR/MAY/JUNE	105	161	280	-119

GOALS AND ACTUAL NEW CLUBS CUMULATIVE



GOALS AND ACTUAL MEMBERS CUMULATIVE



DROPPED CLUBS: 7	135 CLUBS OF 211 ADDED 1 OR MORE NEW MEMBERS	<u>GENDER DISTRIBUTION</u>	
<u>DROPPED MEMBERS</u>		MALE	3,993 (81.37%)
DECEASED	6	FEMALE	914 (18.63%)
CLUB CANCELLED	120	CLICK HERE FOR HEALTH ASSESSMENT DATA	
OTHER	542	FAMILY UNIT MEMBERS	1,919
TOTAL	668	HEAD OF HOUSEHOLD	735
		NON-HEAD OF HOUSEHOLD	1,184